



August 2022

Elwha News

čḡéḡḡxʷaʔ syácam

LOWER ELWHA KLALLAM TRIBE

háḡnəḡ cn – Thank You
Dr McEachrane-Gross
(Dr McG)



The Lower Elwha Health Department would like to wish a happy retirement to our wonderful Dr McG. She has provided compassionate and excellent medical care to the community for over 7 years. Her dedication to her patients extended beyond the clinic walls, by providing medical care in the patient home. She educated future providers, some of whom chose to stay with our clinic after their learning experience. Our deepest gratitude.
Her official last day will be August 30th, 2022

háḡnəḡ cn ḡaʔ ti n̓sḡənḡá
Welcome

Lillian Easton ARNP, nurse practitioner
Lower Elwha Health Department
Medical Clinic

Welcome!



The Lower Elwha Health Department would like to introduce our new provider Lillian Easton ARNP to the community. She is trained in primary care and is now accepting appointments. She can see patients of all ages, performs wellness exams, and provides all aspects of general, and chronic medical care. Call for an appointment at: 360-452-6252.

HEALTH DEPARTMENT



STAFFING UPDATES



Tribal Operations/Public Health Officer Update

Do We Still Have COVID Cases?

We have seen a **VERY significant increase** in COVID case in the recent month! To see case visit elwha.org/COVID. Please make sure that you are following quarantine guidance, masking when around others, and checking in on family and loved ones that may be sick with COVID.

Vaccinate youth before school begins!

Kids ages 6 months -17 are now all eligible for COVID vaccinations. Call the clinic now to schedule! 360-452-6252.

Youth 5 and older and now eligible for the booster dose if it has been 5 months since they completed their primary COVID series. Call the clinic now to schedule! 360-452-6252.

50 AND OVER OR IMMUNOCOMPROMISED? CALL LEHD TO SCHEDULE YOUR SECOND COVID BOOSTER DOSE

The adult vaccine support program has reopened!! www.elwha.org/COVID

We are still in Phase 4 of our Re-Opening Plan and Yellow for mask wearing.

We're still in Phase 4 of the COVID reopening plan. Gatherings outdoors with unlimited number of participants, and gatherings indoors with no more than 40 people.

Free COVID Tests

Lower Elwha Klallam Tribe is also offering free COVID tests for local community members that have a recent exposure or symptoms. To request the test to be dropped off for local homes visit: <https://app.smartsheet.com/b/form/7e651f2fb54e8eac868f98687d50d0>

To pick up tests, you can stop by the front desk of Social Services or the Tribal Center, House of Learning, or the Food Bank.

Federal Government is offering free COVID tests that can be delivered through the US Postal Service. To order your free tests visit: <https://www.covidtests.gov/>

State of Washington is offering Free COVID tests as well, they can be ordered here: <https://www.sayyescovidhometest.org/>

Tia Skerbeck, Tribal Operations/Public Health Officer



Community Wellness

The poster features a central green chalkboard with the event title in white, bold, sans-serif capital letters. To the left of the chalkboard are illustrations of a paint palette, a lightbulb, and two crayons. To the right is a large yellow alarm clock. Below the chalkboard is a blue laptop. The entire graphic is surrounded by yellow squiggly lines. At the bottom, there is a blue banner with white text, followed by the event details in black text, and the location at the very bottom. A circular logo is in the bottom right corner.

**LEKT
COMMUNITY
WELLNESS AND
BACK TO
SCHOOL
EVENT**

**16TH
AUGUST
2022**

11-4PM

Lunch Provided by:

FRUGALS FOOD TRUCK!

COVID-19 Vaccines for the entire family (6mo and up), school supplies, FRUGALS Burgers, games, and more!

Lower Elwha Tribal Center
2851 Lower Elwha Rd.

The logo of the Elwha Klallam Tribe, featuring a circular design with a central figure and the text "ELWHA KLALLAM TRIBE" around the perimeter.



Vaccine Information



COVID-19 vaccination is recommended for everyone 6 months and older. Learn more about protecting your child at www.cdc.gov/covid-19/children-teens.html





Vaccine Information



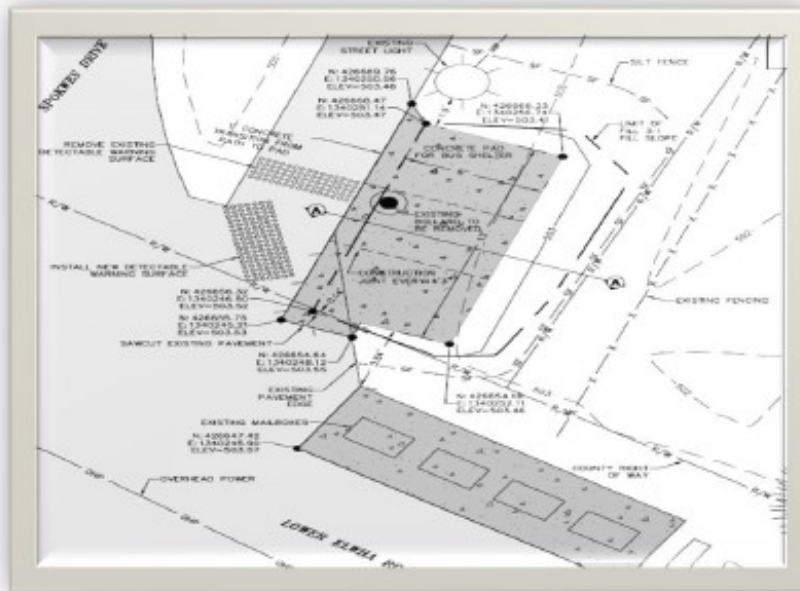
Safe and effective COVID-19 vaccines are available for everyone ages 6 months and older. Learn more about protecting your child at www.cdc.gov/covid-19/children-teens.html



Transportation Improvement Plan

TRANSPORTATION IMPROVEMENT PLAN Update

Design plans for the Spokwes Road Transit Stop Project are almost complete. Below is the draft plan, a photo of the location, and an example of the proposed shelter to be placed near the corner of Spokwes Road and Lower Elwha Road. Your feedback is welcome and appreciated. If you have any questions or any future improvements you would like to propose, contact Susan Matthews at Susan.Matthews@elwha.org or (360)452-8471*7468 or visit Public Works at 465 Stratton Road.



Red Plains 30% PSE Draft Plans



Spokwes Road & Lower Elwha Road



Proposed Transit Shelter Design



Graduation

CONGRATULATIONS



Austin Holloway



Daniel Cable



Emayla Salazar



Imagin Bankson



Jayden Tezano



Jaziah Roseveare



Jerimiah Hall



Joseph Lachester



Marissa Graham



Quanah Wheeler



Rafael Moreno

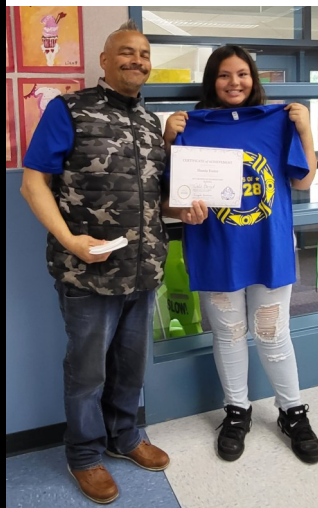


Rhett Wilson

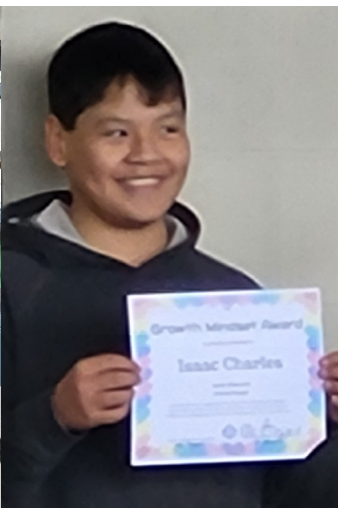


Graduation

GRADUATES!!



Moving on to Middle School!



Congratulations Isaac!
Moving on to Middle School!



Wendy Sampson
Evergreen Graduation 2022



Congratulations Angelina!



Congratulations Grandson Maurice.
Moving on from Dry Creek School to middle school next year.
We are so proud of you Grandson, Grandma, & Grandpa.



Congratulations to Dejon for his PC college AA degree 2022.
We are all so proud of you Dejon.



Moving onward to Middle School next year.
Proud Parents and Grandparents.

Big thanks to everyone who turned out for the parade!

Chava Haller

Hayden Ferrel





Nutrition & Diabetes

JULY 2022 NEWSLETTER

KLALLAM STRONG: NUTRITION & DIABETES NEWSLETTER

Dawn Travelstead, RD, MS, CDE, Lower Elwha Health Clinic

In this issue:

- Fiber Quiz
- Answers
- Diabetes Quarterly
- Did you know



Dietary Fiber Quiz

1. Fiber is classified by 2 types. One is soluble. How is it defined?
 - A. Broken down completely in milk
 - B. Partially dissolved in water
 - C. none of the above
2. The other type is insoluble. What happens to it when you eat it?
 - A. The fiber is broken down in the stomach
 - B. The fiber is broken down in small intestine
 - C. The fiber passes through the intestines
3. How much fiber should you eat in a day?
 - A. 15 to 20 grams
 - B. 25 to 38 grams
 - C. 35 to 50 grams
4. A diet high in fiber has been linked to a lower risk of heart disease?
 - A. True
 - B. False
5. Fiber helps constipation. Which source is better?
 - A. Fiber from fruit
 - B. Fiber from vegetables
 - C. Fiber from wheat and oat bran

6. Which has the most fiber?

- A. Apple with skin
- B. 1 c brown rice
- C. 1 c. raspberries

7. Chia seeds absorb water and become gel-like. How much water can they absorb?

- A. 4-8 times their weight
- B. 10-12 times their weight

Answers:

1. B. Partially dissolves in water
2. C. Fiber passes thru the intestines
3. B. 25—38 grams a day
4. A. True, lowered heart disease by 40%
5. C. Fiber from wheat and oat bran
6. C. Raspberries-8 grams, Apple- 5grams & rice is 3.5 grams
7. B. 10-12 times their weight. Has fiber and omega 3 oils.



Did you know?

Fiber helps with weight control, type 2 diabetes prevention, better gut health and reduced cancer risk.

Don't forget to schedule your diabetes quarterly.

If you would like a nutrition session, please call me @ 360-912-1500.





Nutrition, Diabetes & Food Bank

Diabetes Exams

Hope your summer is off to a good start. Don't forget to schedule these important prevention exams.

Diabetes care guidelines are:

- Yearly eye exam
- Yearly foot exam
- Twice a year dental visit
- Quarterly A1c diabetes test
- Yearly lipid and kidney function test



If you have questions or need a referral, please contact Dawn at 360-912-1500

LOWER ELWHA FOOD BANK

MONDAY 8:30A.M. – 3:00P.M.

TUESDAY CLOSED

WEDNESDAY 8:30A.M. – 3:00P.M.

THURSDAY Upper Elwha Vet Center

12:30P.M. -4P.M.

FRIDAY 8:30A.M. – 3:00P.M.

(360)452-8471 EXT. 7690



SUBJECT TO CHANGE WITHOUT NOTICE
07/08/22 D.C.





Language & Culture Calendar

August - čənítáqəʔ

2022

ES: Elementary students Harmony.arakawa@elwha.org

MS: Middle school age group - Jonathan.arakawa@elwha.org

HS: High School age group - Wendy.sampson@elwha.org

CC: Culture Class – 13 & up w/o adult – Mariah.francis@elwha.org

Karrin.francis@elwha.org

Location: Canoe Shed behind Tribal Center

Sunday	Monday	Tuesday	Wednesday	Thursday	Friday	Saturday
	1 Summer Program 1 st - 7 th grade 9-2pm	2 Summer Program 1 st - 7 th grade 9-2pm	3 Summer Program 1 st - 7 th grade 9-2pm Wednesday's w/ Wendy 11-3pm PG Drum Group	4 Summer Program 1 st - 7 th grade 9-2pm	5 Summer Program 1 st - 7 th grade 9-2pm Klallam Mini Journey CC: Wool Weaving	6 Klallam Mini Journey
7 Klallam Mini Journey	8 Summer Program 1 st - 7 th grade 9-2pm	9 Summer Program 1 st - 7 th grade 9-2pm CC: Wool Weaving	10 Summer Program 1 st - 7 th grade 9-2pm PG Drum Group	11 Summer Program 1 st - 7 th grade 9-2pm CC: Wool Weaving	12 Last day of Summer Program 9-2pm Klallam Mini Journey CC: Wool Weaving	13
14 High School	15 Nature Bridge	16 Drum Group 5pm Over Night	17 Wednesday's w/ Wendy 11-3pm PG Drum Group CC: Wool Weaving Camp.	18 CC: Wool Weaving Come Home	19 CC: Wool Weaving	20
21	22	23 CC: Wool Weaving	24 Wednesday's w/ Wendy 11-3pm CC: Wool Weaving	25 CC: Wool Weaving	26 CC: Wool Weaving	27
28	29	30 Drum Group 5pm Drum group welcoming @ PC 6pm	31 Wednesday's w/ Wendy 11-3pm PG Drum Group			



Library

Summer Reading Program

Don't forget that kids up to 18 are invited to join the Library's summer reading program, which runs through August 19th. This year we're doing Book Bingo, where kids pick a book which fits each category and try to get a bingo (or two). Come down to the Library to pick up a bingo sheet, get full rules and details, get book recommendations, and pick up a free book, to keep! (One per child) For the first 20 minutes read for each category, kids can get a ticket in our weekly prize drawing, which happens each Friday at 3:00pm. Finishing the book will earn a second ticket for that category. See the picture below for some examples of the many awesome weekly prizes we have available. For each bingo completed (that is, at least 20 minutes of reading for each category in a row, column, or diagonal), kids can earn a ticket in our grand prize drawing, which will also happen on August 19th at 3:00pm. Grand prizes for this summer include a National Geographic Glowing Marble Run, a pair of JBL wireless headphones, a LEGO Avengers Iron Man Hall of Armor set, and a Samsung Galaxy tablet.

Grand Prizes:



Some of the Weekly Prizes:



Elder Book Delivery

We are considering starting a new program at the Library which would deliver books to Tribal Elders weekly or as often as necessary. Participants in the program would select books (either through the Library's web catalog or by contacting us directly) to be delivered to their home and books will be picked up as well when finished. We are currently assessing the feasibility of such a program and would like to hear your feedback to understand how much demand exists for the program. If this sounds like a program you would be interested in participating in, please contact Jason with any feedback you might have. You can visit us during our business hours, Mon-Fri 8am-4pm, call at 360-452-8471 extension 7431, or email jason.morris@elwha.org or jessica.egnew@elwha.org. We look forward to hearing from you!



Head Start

LE Head Start Page 1 August 2022

Lower Elwha Head Start & Early Head Start

360)- 452-2587 Ext 2 Early Childhood Director—Lola
(Ext 1 Child Care Manager/Bobi)

Health Manager: Deanna Transportation: Francess

Education Manager: (Vacant) Prenatal Educator: Darla

Family Community Partnership Manager & Enrollment: Michelle

August 2022 čəntáqa?

What's happening at Lower Elwha Head Start?

291 Spokwes Drive, PA 360-452-2587

- ♦ August 10/Wednesday, 5:30-7:00 pm: Port Angeles School District and Crescent School District Kindergarten Information Meeting with parents/guardians, LEHS will provide food for all
- ♦ August 12: Early Head Start last day until September 1/ Thursday
- ♦ August 15-19: Head Staff attending Northwest Head Start Coalition Conference
- ♦ August 22-26: Inservice for Head Start staff
- ♦ August 29/Monday: 5:00-7:00pm Lower Elwha Head Start & Early Head Start Parent Orientation, food and child care will be provided
- ♦ September 1/Thursday: First day of 2022-23 Lower Elwha Head Start & Early Head Start



WELCOME OUR NEW HEAD START TEAM MEMBER

Please join us in welcoming Chloe Mandeville to our Head Start team in June 2022. She is a teacher's assistant in the Early Head Start program. Chloe graduated from Crescent High School in 2021. She enjoys her new job, especially watching the children grow and also creating new bonds with the children. Her dream vacation is to go to Mexico. Her favorite music artist is Chris Stapleton. Welcome Chloe!!

Her advice to the children is to "be happy and always have fun!"

JOBS @ Lower Elwha Head Start

If you or someone knows of anyone looking for a job, please apply.

- | | |
|---|---------------------------------------|
| ♦ Early Head Start Lead Supervising Teacher | * Head Start Floating Teacher's Aide |
| ♦ Bus Driver/Teacher's Aide | * Head Start Part Time Shadow Teacher |
| ♦ Early Head Start Lead Teacher | * Head Start Teacher's Aide |
| ♦ Early Head Start Teacher's Aide | * Teacher's Aide/Bus Aide |
| ♦ Early Head Start Full Time Shadow Teacher | * Education Manager |
| ♦ Substitute Teacher's Aide | |

Call Head Start: 360-452-8471 x 7471 Director, Lola Moses



Northwest Justice Project

RENTAL APPLICATIONS KEEP GETTING DENIED?

Many landlords automatically turn down rental applications from anyone with any “eviction record.” This means an unlawful detainer (eviction) appears on your tenant-screening report. These reports usually include all filed cases dating back at least 7 years, even if you resolved them. A landlord could deny your application because of an eviction record, even if the judge or landlord dismissed the case before trial, or you won, or the case is very old.

State law at RCW 59.18.367 may allow you to get an order from the eviction court that stops tenant screening companies from using your eviction record when you apply for housing.

If you were a defendant in an eviction case and you have “good cause” for the court to consider, you may be able to obtain an Order of Limited Dissemination. Once the court grants this order, tenant screening companies cannot tell your landlord about the eviction or use it in calculating a rental score or making a recommendation.

You must:

- Ask the court for an order that stops these companies from using the eviction record.
- Send a copy of the order to any company doing a tenant screening for your landlord to make sure they do not report your eviction.

This order does not keep a potential landlord from asking if you have ever been evicted or looking up the records on their own. It does keep the tenant screening report from telling the landlord about the eviction.

FOR FAQ’S AND DOWNLOADABLE HELP WITH FILLING OUT FORMS, VISIT:

<https://www.washingtonlawhelp.org/resource/how-to-stop-a-landlord-from-denying-your-housing-application-because-of-an-eviction>



IF YOU ARE LOW INCOME AND IN NEED OF LEGAL ASSISTANCE REGARDING ISSUES SUCH AS THESE, NORTHWEST JUSTICE PROJECT MAY BE ABLE TO HELP YOU.

THE NATIVE AMERICAN UNIT AT NORTHWEST JUSTICE PROJECT PROVIDES FREE CIVIL LEGAL SERVICES TO ELIGIBLE NATIVE AMERICAN & ALASKAN NATIVES WHO CANNOT AFFORD A LAWYER IN WASHINGTON STATE.

IN KING COUNTY: CALL (206) 707-0920 | OUTSIDE OF KING COUNTY: CALL NJP'S CLEAR HOTLINE AT 1-888-201-1014 (M-F 9:15 A.M. - 12:15 P.M.)



Child Care

The Children's House of Learning

Lower Elwha Child Care

291 Spokwes Drive

(360) 504-3141

Fax (360) 504-3651

Program Director

Bobi Clark

Administrative Assistant

Deann Lester

Receptionist

Tiana Fieldsend

August

Newsletter

Clothing Closet

For the summer we are moving our clothing closet outside and extending our hours. Come see us on Tuesdays between 8:30 & 4:30.

Donations of clean, new or gently used items are still being accepted Mon-Fri during business hours. Please no stained or ripped items.

A Huge shout out to the community for all of the wonderful donations that keep being brought in!!!

Infant

We hope everyone is enjoying the warm weather we've been having! In the Duck's class this month we will be working on different sensory activities and fun little art projects.

- Teacher
Karalynn, Amy &
Jaylynn



Lower Elwha Child Care



Child Care



Greetings from the Hummingbird class!

August is not only the month of “hot August nights” but also the National Family fun month! In observation of this great end-of-summer month, the Toddler class will be enjoying arts and crafts that will explore not only our families, but our planet’s family....the solar system! We will be utilizing a family camping theme to observe the planets and stars around us (thing stargazing at camp) as well as the stars in our lives, our families! August is also the beginning of a new project the teachers will be undertaking by keeping a memory journal for all of our little hummingbirds. We will document each day a little comment about their day so when their journey in our class has commenced they have a little keepsake. We look forward to finishing out our summer with a “big bang” and creating many more memories as we herald in the new season. – Deanndra Cowden

Preschool

Teacher Catherine, formerly of our infant room, has moved back to preschool as the Lead Teacher, and has some fun things planned for August.

Happy Birthday

Teacher Jada

Teacher Niters (Juanita)

Administrative Assistant
Deann

Cook Korene



Summer is short, so make it sweet. Peace, Love, Joy and Ice Cream!

Afterschool

As the summer is underway, the whales in the afterschool class have been busy with art projects, enjoying walks, and busy soaking up the nice weather. Teacher Crystal, of the Ravens Head Start class, has been popping in and sharing her creativity and creating fun projects with the kids. Thank you Teacher Crystal!



Klallam Language Learning Opportunity

Interested in learning nəxʷsłáyəmúçən?

In September 2022, 'Introduction to the Klallam Language' will be offered for a third year at Peninsula College!

What you need to know to start planning...

- Class held via Zoom, Tuesday-Friday, 12:00-1:00 p.m.
- Fall 2022 Registration begins May 23, 2022
- Fall Quarter begins September 27, 2022

***SCHOLARSHIPS AVAILABLE
FOR TRIBAL PEOPLE
Email longhouse@pencol.edu***

Questions? Contact...

LEKT: jonathan_arakawa@outlook.com

JST: lgreninger@jamestowntribe.org

PGST: brooke.wellman@me.com;

karrons@pgst.nsn.us



**PENINSULA
COLLEGE**



Family Advocacy

Lower Elwha Family Advocacy Program

Greetings Tribal Members and Readers!

I hope you are enjoying your summer time as much as I am. It has truly been an honor and a privilege reaching twenty-two years of residency and working for this beautiful community of the Lower Elwha Klallam Tribe. I am grateful to each and every one of you who have been supported, helped, and accepted me ever since I stepping into this land. I would not have made it all through the years without of your love. I humbly ask for your continued support. Thank you very much!!!

To give you a heads up:

Lower Elwha Family Advocacy Program along with grant department and all involved in grant writing, have submitted an OVW-Office of Violence Women grant, “*Grants to Indian Tribal Government Program Solicitation*” on May 24th. We hope to hear from OVW whether they will approve our grant proposal by September 2022. Let us all hope that they will consider approving us so that we can continue our current work and start a new project that benefits our community and those victims of domestic violence, dating violence, sexual assault, stalking, and sex trafficking. As of now, the LEFA is running under OVW grant which will end on September 30th.

An awareness of *MMIW/P – Missing and Murdered of Indigenous Women/People* was successfully held on May 5th in collaboration with the Police Department/Crime Victim Program, Lower Elwha Food and Fuel, Clinic, Council and other programs. Special thanks to Nancy Hamilton and the Police department for their hard work, Angelina Sosa and the Culture Program, LEKT Business Council and Social Services department always in support of our efforts to bring educational awareness into the community, and to all participants and volunteers for making MMIW/P event so worth it.

July 22nd, another partnership with the Culture Program (Angelina Sosa) for drum making and awareness about healthy relationships.

Please watch for additional community events or support group information at Elwha.org, email, or mail outs.

I would like to sincerely THANK YOU Becca Weed, SS director and Iliana Jones, Health Transition for taking on extra work and patience to manage the Lower Elwha Family Advocacy Program direct services and to Nancy Hamilton for partnering with community awareness event on behalf of LEFA and for the community at large while I was on personal leave last June.

Sincerely Yours,

Beatriz Arakawa

Program Manager and Victim Advocate

3080 Lower Elwha Rd. Port Angeles, WA 98363

Office: 360-565-7257 ext. 7453; Cellular Hotline 1: 360-460-1745; Hotline 2: 360-775-9346

E-mail: Beatriz.arakawa@elwha.org

Assistance to Victims of Domestic Violence, Sexual Assault, Dating Violence, Stalking, and Provide Prevention/Awareness.

Mission: Victim’s Safety and Autonomy through Advocacy and Community Awareness





NatureBridge

Overnight chaperones and evening program volunteers needed!



Elwha Summer Science Camp

High School Camp (Going into 9th/10th/11th/12th grade)

August 7 – 12, 2022

Stay for 5 days and 5 nights at the NatureBridge facility on Lake Crescent participating in science and cultural activities. Transportation, food, and wilderness supplies provided. Earn 0.25 science credit for next school year this summer!

Daily Schedule:

August 7th: *Meet at Swain's at 2:00 pm to pick out your hiking shoes. Please bring all of your extra clothes and overnight gear. We will leave Swain's at 3 pm to head to NatureBridge.*

August 7th-12th: *Set up cabins at NatureBridge for the week. Students will stay overnight at the NatureBridge campus. We will have cultural and science activities with the help of NatureBridge staff and Elwha Language and Culture staff.*

Interested in registering? Pick up and turn in the Enrollment Packet in the Tribal Library. There are only 14 spots available (first come, first served, LEKT members get priority).

Questions? Contact the Education Department – 360-452-8471 Ext. 7425 or email jessica.egnew@elwha.org or kristina.cain@elwha.org



Natural Resources

Coastal Job: Tribal Fish and Wildlife Technician

Vanessa Castle keeps a close eye on the salmon and big cats that roam around her coastal home.

As told to Lindsay VanSomerén, and published in Hakai Magazine

May 27, 2022

Some people work in cubicles, others work in kitchens, but the most intriguing workplace of all may be the coast. Meet the people who head to the ocean instead of the office in our Coastal Jobs series.

Vanessa Castle is a member of the Lower Elwha Klallam Tribe, based near Port Angeles, Washington, where she works as a fish and wildlife technician. She continues her tribe's tradition of caring for the land by helping monitor the return of salmon on the Elwha River after the world's largest dam removal project and investigating the population and predator-prey dynamics of big cats on the Olympic Peninsula.

My family members have always been salmon fishers. Even as a child, my mom would take me out gillnetting on the Elwha to exercise our treaty rights. My job was to clean fish. We had a fish camp right on the riverbank where we'd stay for weeks at a time, only coming home to shower.

That was when the Elwha and Glines Canyon Dams were still in place. They were taken down starting in 2011. Our fish camp is gone now—it was washed away by the river. I was a little sad to see it go. But our elders tell us that the river is living and breathing, changing with the seasons. It's beautiful to see the river move freely. And now that I work for my tribe, I can see the fish coming back. I've been one of the first people to see spawning salmon in some areas where they hadn't been in 100 years, and that's an indescribable feeling.

When I was younger, I left to see the world. I ended up at Standing Rock on the border of South and North Dakota for over six months fighting to protect the water. I was even arrested and charged with a felony, which was thankfully dismissed. I came back with a profound sense that I needed to do the same work of protecting the water from exploitation here, with my tribe.

I was first hired to help the Lower Elwha Klallam Tribe's fisheries department estimate the numbers of returning fish after the dam removals. While looking for fish, we have to walk upstream, so that we don't muddy the water as we're trying to see into it. I've also helped with a snorkel survey, free-floating down the river in a drysuit looking for fish in their nest, as well as spawned-out carcasses.

Our department is like a family. I wish more young Indigenous people knew that these are good jobs. When some of the fish projects I was working on ended, my bosses transitioned me to a new project looking at how coastal cougars affect deer and elk populations. So now I split my time.

I used to be afraid of cougars. As a hiker, I was taught that they're a big danger, like they're always watching you. But with this project, I get to watch them. Every six months, I help review files captured by a network of trail cameras to get a sense of the population size and of what individual animals are doing. I also go into the field to check on cougars when their GPS collars show that they're hanging around one location a lot, such as after they kill prey.

My favorite part of the job is doing captures. We wait for snow. Then, it's time. We—technicians and biologists—drive



old logging roads until we cross cougar tracks. We have a team of specially trained hounds, and they find and tree the cougar. We have to be very careful that we drive the animal up a good tree, so it's not hurt on the way down. It can't be hanging over a cliff or a river, for example. We dart the animal and back off, letting it come down on its own. When it falls asleep, we collar it, and take samples for genetic analysis so that we can see how the cougars are all related.

The best part is making sure it wakes up okay—seeing a cougar staring back at you from 20 feet [six meters] away is something that can change your life.



Community News



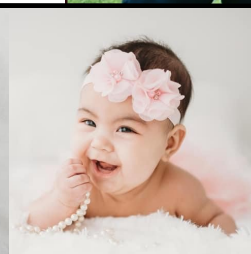
I just wanted to thank the following people for making my trip to Texas for the Dream All American Bowl and National Showcase possible. To my Grandparents, Mom and Joe and my Dad, My Aunt Jeannie and Garnet for doing the 50/50 raffle and everyone that bought tickets, My Uncle Marvin and Brother AJ for coming to support me in Texas, my Aunt Sateva for bringing my brother to and from the airport, great surprise btw, and Miss Stephanie for all of your help. I would also like to thank everyone that watched the game. It was a great learning experience and a great chance to play with the best in the country. It was an experience I will never forget. Thank you all. Oliver Martinez.



"2 years, 24 months and 730 days of heart warming happiness and joy with you. I am so proud to call you my daughter, and brother is proud to call you his sister. You are smart, sassy, strong, beautiful, sweet, caring, kind.

Happy 2nd Birthday Annalise Jayla!
Love, Mom & Teagan

Parents: Yvonne Bolstrom & Manuel Sanchez
Brother: Teagan Bolstrom "

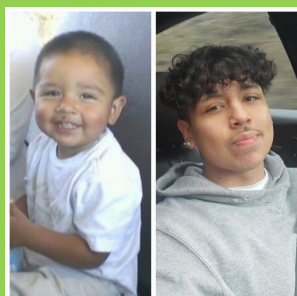


Happy Birthday wishes to: Becky Charles, Naizoni Cagey, Alan V. Charles, George Charles, Charlene Lauderback, Juanita Charles, Carol Brown and Ralph Ellsworth.

Love you all and stay safe and healthy

Elaine & Mike McFadden

Happy 18th Birthday Antonio!
We love you so, so much!



Love Mom and Makai

**Your
Announcement
Here!**

Email Community News to
Newsletter@Elwha.org by the
3rd Friday of every month for
inclusion into the next monthly
newsletter.

LAMONT'S
Masonry & Concrete LLC

Custom Concrete - Patios - Block Work
Lic: LAMON MC 294 LT

LAMONT WILLIAMS

Willing To Travel
Commercial & Residential
(360)374-5495 Office
(360)640-9225 Cell



Homeowner's Assistance Fund



House size	Household Income
1	\$74,250
2	\$84,750
3	\$95,400
4	\$105,900
5	\$114,450
6	\$122,850

Average Medium Income %150

Homeowner's Assistance Fund

The HAF was established by the Department of the Treasury to provide funds to eligible entities for the purpose of preventing homeowner mortgage delinquencies, defaults, foreclosures, and displacements of homeowners experiencing financial hardship after January 21, 2020 due to the Coronavirus pandemic, through assisting with qualified expenses related to mortgages and housing.

Eligibility Criteria

1. Enrolled Lower Elwha Klallam Tribal member; and
2. Homeowner whose primary residence is within Clallam County; and
3. Experienced a financial hardship after January 21, 2020; and
4. Have a household income equal to or less than 150% of the area median income; or
5. Have applicant must have an income equal to or less than 100% of the area median income.

LE enrolled Elders (60 yrs.+) will
be given priority until
October 3, 2022

All other eligible
LE enrolled member applications
will be accepted as of
October 4, 2022

Urgent safety and sanitation needs: reviewed case by case

\$6,000, one time, cap on funds per applicant. LIMITED FUNDS ARE AVAILABLE.

Please Contact: Nancy Hamilton, (360) 452-8471 #2960

nancy.hamilton@elwha.org

or apply online @:

<https://app.smartsheet.com/b/form/a21e2a03f6094721993ccc621d6013cf0>



LEPD

Service Record for L & O	June
Alarm/Alarm Check	5
Animal Calls	4
Boating Activity/Hunting	1
Burglary	1
Business Check	162
Citizen Assist	9
Citizen Contact	15
Civil	1
Community Oriented Policing	76
Court Paperwork/Service	8
CPS/APS	1
Courtesy Transport	1
Disturbance	3
Drug Violation	1

Follow Up	8
Found/Recovered/Lost Property	2
Frequent Patrol Request	3
Misc. Info/False Reporting	8
Other Agency Assist	39
Prisoner Transport	2
Report of Open Door/Window	1
Suspicious Person/Vehicle	3
Traffic Control/Emphasis/Hazard	2
Traffic Stops	46
Trespass	3
Welfare Check	2
Warrant Attempts	2
Warrants-Non-Tribal	1
Total	410



Thank you to everyone who attended Pepsi With Police! Keep an eye out for more community events throughout the summer.



Resolution List

Date	Resolution Number	Title	Vote		
			For	Against	Abstain
7-19-22	57-22	Authorizing the filing of applications with the federal transit admin. An operating admin. Of the USDOT for federal transportation assistance authorized by chapter 53 of title 49 of the United States code and any other federal statutes administered by the federal transit admin.	3	0	0
7-19-22	58-22	Trenchless constructions services, LLC contract Dry Creek utility bore for sewer line.	3	0	0
7-19-22	59-22	Approval of the LEKT sexual assault response team (SART) Policies and procedures	3	0	0
7-19-22	60-22	Approval of grant application between the LEKT police dept. and the US dept. of homeland security to participate in FY 2022 operation stonegarden	3	0	0
7-19-22	61-22	Approval of road ownership change	3	0	0
7-19-22	62-22	Approval of the first amendment to the settlement agreement between the State of Wa. And LEKT for the Tse-Whit-Zen village	4	0	0
7-19-22	63-22	Authorization of FY 2022 Pacific Salmon treaty funds	3	0	0
7-19-22	64-22	Authorization of FY 2022 Timber, Fish & Wildlife supplemental funds	3	0	0



AIHC TRIBAL AND URBAN INDIAN HEALTH IMMUNIZATIONS COALITION

NEW DATA SHOWS THAT BOOSTERS INCREASE IMMUNITY AGAINST ALL COVID-19 VARIANTS.

Three months since they became eligible, more than **two-thirds** of kids ages 5 to 11 are still not fully vaccinated. Kids can develop long COVID symptoms and the potentially fatal multisystem inflammatory syndrome.

Keep kids safe and in school by getting them full vaccinated as soon as possible.



PULLING TOGETHER FOR WELLNESS

American Indian Health Commission
Tribal/Urban Indian Health Immunizations Coalition
<https://aihc-wa.com/immunizations>

SOURCE:
<https://covid.cdc.gov/covid-data-tracker/#vaccination-demographics-trends>



Tribal Directory

Tribal Center

2851 Lower Elwha Road
Port Angeles, WA 98363
360.452.8471

Executive Director

Tonya Greene, Ext. 7469

Tribal Operations Officer

Tia Skerbeck, Ext. 7420

CFO Froilan Sarmiento, Ext. 7463

Accounting

2851 Lower Elwha Road
Melissa Gilman, Grants
Administrator Ext. 7461
Jo Klinski, Controller/Payroll
Ext. 7460

Cedar Box Smoke Shop

4779 S Dry Creek Road
Leif Ellis, 360.477-1170

Children's House of Learning (Early Head Start, Head Start, Child Care, Prenatal Program)

291 Spokwes Dr
360.504.3141
Lola Moses, Early Learning Director
Ext. 7471

Bobi Clark, Child Care Program
Manager Ext. 3402
Deanna Murray, Health Manager
Ext. 7470

Michelle Charles, Family and
Community Partnership Ext. 7474
Donna Goldsbury, Prenatal
Program Ext. 7475

Education

Jessica Egnew, Director Ext. 7425

Elwha Peaks Cannabis

4775 S Dry Creek Rd, Port Angeles
360.912.3469

Elwha River Casino

631 Stratton Road, 452.3005
Mike Watson, General Manager

Elder Services

Samantha Acosta, Coordinator
Ext. 7466

Employment Services/HR/TERO

Sandra Johnson, Director Ext. 7429

Enrollment Services

Marilyn Edgington, Ext. 7444

Facilities & Maintenance

Warren Stevens, Director Ext. 7432

Gaming Commission

631 Stratton Road
360.452.5628
Elaina Begay, Director

Health Clinic

243511 Highway 101 West
360.452.6252
Lorinda Robideau, Health Services
Director

Heritage Center

401 E. First Street, 360.417.8545
Nicole Volkmann, Manager
Ext. 2912

Human Resources

Ext. 7430



Housing Authority

22 Kwitsen Drive, 360.457.5116
Janet Hren, Interim Director
Ext. 7552

Information Technology

Ken Giersch, Director Ext. 7541

Justice Center/Tribal Court

341 Spokwes Drive
360.452.6759

Klallam Counseling Services

243613 W Hwy 101, Port Angeles
360.452.4432
Stormy Howell, Treatment
Manager

Law & Order/Police Dept.

Justice Center

341 Spokwes Drive
360.452.6759
Sam White, Chief of Police Ext.
2922

LOWER ELWHA FOOD & FUEL

360.477-1170

Natural Resources/Fish Hatchery

760 Stratton Road
360.457.4012
Matt Beirne, Director Ext. 7485

Planning & Development

Arlene Wheeler, Director Ext. 7437

Prevention Health/GYM

Jason Wheeler, Ext. 7440

Social Services

3080 Lower Elwha Road
360.565.7252
Becca Sampson-Weed, Director
Ext. 7456



BUSINESS COUNCIL



Frances G. Charles
Tribal Chairwoman, Ext. 7411



Russ Hepfer
Vice Chairman, Ext. 7412



Ed Johnson
Secretary/Treasurer Ext. 7414



Steve Joaquin Robideau
Council Member, Ext. 7413



Anthony Charles
Council Member, Ext. 7415

Dates to Remember:

8/7—8/12 NatureBridge High School Camp
8/12 Early Head Start Last Day Until
September!
8/16 Community Wellness and Back to
School Event
8/19 Library Summer Reading Program
Ends
8/29 Head Start Parent Orientation
8/30 Dr McG's last day



WOULD YOU RATHER NOT RECEIVE A PAPER?

We are evaluating the level of Interest for emailed newsletters. If you would rather not receive the newsletter by mail, please contact Chrissi Ducotey by email (chrissi.ducotey@elwha.org). She will begin to gather a list of those who prefer to receive electronic files only, and we will determine if this is a workable option.

**Newsletter submissions and suggestions may
now be received at
Newsletter@Elwha.org**

Lower Elwha Klallam Tribe
2851 Lower Elwha Road
Port Angeles, WA 98363

PRSRT STD
U.S. Postage
PAID
Olympic Mailing
Services

Change Service Requested

ELWHA NEWS

Lower Elwha Klallam Tribe

ፖፖሊዝግጥም ከፖሊስ ስራ ላይ

“THE STRONG PEOPLE”

The *Elwha News* is a monthly publication of the Lower Elwha Klallam Tribe to inform, educate and stimulate interest in the Tribe and community affairs. It also raises awareness and respect for the Reservation and its resources. For news articles, please send to the address below by the third Friday of the month.

Chrissi Ducotey
Administrative Education & Training
Specialist
Elwha Klallam Heritage Center
401 E First St
Port Angeles, WA 98362
Phone: 360.417.8545
Chrissi.Ducotey@elwha.org

Note: This newsletter is uploaded monthly to the Lower Elwha Klallam Tribe webpage *elwha.org*

You can find it under the “Announcements” section titled: **Newsletter**

IN THIS ISSUE:

■ Child Care	Pg 16-17
■ Community News	Pg 22
■ Community Wellness	Pg 3
■ Directory	Pg 26
■ Family Advocacy	Pg 19
■ Food Bank	Pg 11
■ Graduation	Pg 8-9
■ Head Start	Pg 14
■ Health Department	Pg 1, 6
■ Homeowner's Assistance Fund	Pg 23
■ Language & Culture	Pg 12, 18
■ LEPD	Pg 24
■ Library	Pg 13
■ Natural Resources	Pg 21
■ NatureBridge	Pg 20
■ Northwest Justice Project	Pg 15
■ Nutrition & Diabetes	Pg 10-11
■ Resolution List	Pg 25
■ Transportation Improvement Plan	Pg 7
■ Tribal Operations Officer Update	Pg 2
■ Vaccine Information	Pg 4-5