

Elwha News

LOWER ELWHA KLALLAM TRIBE

OPEN

IN THIS ISSUE:

First Salmon Ceremony.....Page 2

Emergency Preparedness...Page 6

Child Care.....Page 7

After School Program. ..Page 10, 11

Head Start.....Page 14, 15

Birthday List.....Page 18

Announcements.....Page 21

Gym Schedule.....Page 22

Lower Elwha Klallam Tribe
2851 Lower Elwha Road
Port Angeles, WA 98363

PRSRT STD
U.S. Postage
PAID
Olympic Mailing
Services

Change Service Requested

ELWHA NEWS

Lower Elwha Klallam Tribe

ᑭᓐᔪᓂᓄᓐ ᓇᓕᓂᓄᓐ

“THE STRONG PEOPLE”

The *Elwha News* is a monthly publication of the Lower Elwha Klallam Tribe to inform, educate and stimulate interest in the Tribe and community affairs. It also raises awareness and respect for the Reservation and its resources. For news articles, please send to the address below by the third Friday of the month.

Chrissi Ducotey
Administrative Education & Training
Specialist
Elwha Klallam Heritage Center
401 E First St
Port Angeles, WA 98362
Phone: 360.417.8545
Chrissi.Ducotey@elwha.org

Note: This newsletter is uploaded monthly to the Lower Elwha Klallam Tribe webpage *elwha.org*

You can find it under the
“Announcements” section titled:
Newsletter

IN THIS ISSUE:

Birthdays	Pg 24
Community News	Pg 11
Directory	Pg 26
Elwha Peaks	Pg 23
Elwha River Casino	Pg 22
Emergency Rental Assistance	Pg 6-7
Family Advocacy	Pg 19
Food Bank	Pg 20-21
Head Start & Early Head Start	Pg 18
Health Department	Pg 14-15
Heritage Training Center	Pg 16
Language & Culture	Pg 8-10
Nutrition & Diabetes	Pg 13
Police Call Logs	Pg 24
Resolution List	Pg 25
Tribal Operations Office Update	Pg 2
Vaccine Information	Pg 3-5
Vaccine Support Program	Pg 12



August 2021

Elwha News

čʔéʔtɬxʷaʔ syécəm

LOWER ELWHA KLALLAM TRIBE

Attention Homeowners



Attention Homeowners

Do YOU own your home ? You may qualify to RECEIVE funding for home repairs!

Lower Elwha is applying for funding to help out our homeowners! These funds are federal dollars, so in order for you to receive help, you must be income eligible. We would like to provide information to you and discuss home repairs for homeowners.

Meeting Date: Thursday, August 19, 2021

TIME: 4:00 pm Group 1
5:00 pm Group 2
6:00 pm Group 3



LOCATION: Tribal Center Dining Hall
2851 Lower Elwha Rd. Port Angeles

*Per **LEKT Resolution 80-21** and the Tribes reopening plan under #4 where members of the tribe may engage in in-door gatherings, of up to 40 participants, but only if appropriate social distancing practices are followed and masks are used by those persons who are not fully vaccinated when they are not eating or drinking.*

Due to LEKT being in phase 3.5 and current restrictions, there will be three (3) meeting times for the community homeowners regarding this program, please attend the timeframe that suites your schedule.

*** Please enter into the dining hall from the hallway by the tribal kitchen and across from the Elders lounge, you will need to sign in before entering. We encourage that you leave your children home or elsewhere, as we can only allow 40 people into the dining hall at one time, which includes all staff.

All Tribal Homeowners are encouraged to attend

NOT VACCINATED—YOU ARE REQUIRED TO WEAR A MASK



TRIBAL OPERATIONS OFFICER UPDATES

Tia Skerbeck 360.452.8471 ext. 7420

VACCINE SUPPORT PROGRAM

The Youth and Adult COVID-19 vaccine support program is still under way, with promotional items ranging from \$200 gift cards to \$400 checks. To participate you must be fully vaccinated, meet the eligibility criteria, and apply online. Limited paper applications are available at the Tribal Center, and Social Services. Assistance completing the application is available, just call me at 360-452-8471 x7420.

COVID-19 CASES

CCOVID cases have been staying low for our community, with only 2 cases in the past 2 weeks. Keep up the great work, continue to stay home when sick, and get your vaccination if you haven't already. Vaccinated people are starting to contract COVID, with no symptoms, this is called "break through cases" when this happens it is very important for the vaccinated positive COVID individual to follow isolation restrictions, as COVID can still very easily be passed to others. If you are vaccinated and notified that you're a close contact to someone who's tested positive, please ensure you're tested at 5 days from exposure to the person that tested positive. This helps us contain the spread of COVID and continue to detect it in those that may have no symptoms.

VACCINES

Currently the Health Department is scheduling COVID vaccinations for the Moderna, Johnson & Johnson, and Pfizer vaccines. Youth aged 12-17 are now eligible for the Pfizer vaccine and will need a guardian to accompany them to their appointment. To schedule your COVID vaccine, call the clinic at 360-452-6252.



FREEZERS

The freezers are finally starting to be delivered! The freezers have started to ship from the manufacturer, and the appliance company has been reaching out to folks. So far the small (less than 10 cubic feet) chest freezers have been delivered. The next batch due for arrival are all of the standup style. These should arrive in two semi-trucks. Expect to hear from the appliance company around the end of July/beginning of Aug to schedule delivery and install times. The large chest freezers (larger than 10 cubic feet) are still being manufactured, and we don't have an estimated arrival date, but hopefully later in August.



PHASE 3.5

On June 29th, resolution 80-21 was approved which moved the Tribe into Phase 3.5 of the re-opening plan. This phase allows for vaccinated people to no longer wear masks (with exceptions for health department staff, and staff that work with populations that are not eligible for the COVID-19 vaccine (kids and infants)), larger group sizes indoors (40), and unlimited groups size outdoors. The CDC's guidelines for travel should be followed.



BUSINESS COUNCIL



Frances G. Charles
Tribal Chairwoman, Ext. 7411



Russ Hepfer
Vice Chairman, Ext. 7412



Ed Johnson
Secretary/Treasurer Ext. 7414



Steve Joaquin Robideau
Council Member, Ext. 7413



Anthony Charles
Council Member, Ext. 7415

Dates to Remember:

August 3: New Food Bank Opens

August 7: Canoe Practice

August 14-16: Hide Cleaning Class

August 15: "A Patient's Guide To Medical Cannabis"

August 17: Culture & Language Open House

August 19: Home Repair Federal Funding Meeting

August 26: Summer Reading Program Ends

Enrollment Notification: Marilyn Edgington's office has moved!
You will now find her at:
463 Stratton Rd.

WOULD YOU RATHER NOT RECEIVE A PAPER?

We are evaluating the level of Interest for emailed newsletters. If you would rather not receive the newsletter by mail, please contact Chrissi Ducotey by email (chrissi.ducotey@elwha.org). She will begin to gather a list of those who prefer to receive electronic files only, and we will determine if this is a workable option.

**Newsletter submissions and suggestions
may now be received at
Newsletter@Elwha.org**



Tribal Directory

Tribal Center

2851 Lower Elwha Road
Port Angeles, WA 98363
360.452.8471

Executive Director

Tonya Greene, Ext. 7469

Tribal Operations Officer

Tia Skerbeck, Ext. 7420

CFO Froilan Sarmiento, Ext. 7463

Accounting

2851 Lower Elwha Road
Melissa Gilman, Grants
Administrator Ext. 7461
Jo Klinski, Controller/Payroll
Ext. 7460

Cedar Box Smoke Shop

4779 S Dry Creek Road
Leif Ellis, 360.477-1170

Children's House of Learning (Early Head Start, Head Start, Child Care, Prenatal Program)

291 Spokwes Dr
360.504.3141
Debbie Hales, Early Learning
Director Ext. 7471
Bobi Clark, Child Care Program
Manager Ext. 3402
Deanna Murray, Health Manager
Ext. 7470
Michelle Charles, Family and
Community Partnership Ext. 7474
Donna Goldsbury, Prenatal
Program Ext. 7475

Education

Jessica Egnew, Director Ext. 7425

Elwha Peaks Cannabis

4775 S Dry Creek Rd, Port Angeles
360.912.3469
Nathaniel McKnight, Operations
Director

Elwha River Casino

631 Stratton Road, 452.3005
Mike Watson, General Manager

Elder Services

Samantha Acosta, Coordinator
Ext. 7466

Employment Services/HR/TERO

Sandra Johnson, Director Ext. 7429

Enrollment Services

Marilyn Edgington, Ext. 7444

Facilities & Maintenance

Warren Stevens, Director Ext. 7432

Gaming Commission

631 Stratton Road
360.452.5628
Elaina Begay, Director

Health Clinic

243511 Highway 101 West
360.452.6252
Lorinda Robideau, Interim Health
Services Director

Heritage Center

401 E. First Street, 360.417.8545
Nicole Volkmann, Manager
Ext. 2912

Human Resources

Ext. 7430



Housing Authority

22 Kwitsen Drive, 360.457.5116
Janet Hren, Interim Director
Ext. 7551

Information Technology

Ken Giersch, Director Ext. 7541

Justice Center/Tribal Court

341 Spokwes Drive
360.452.6759

Klallam Counseling Services

243613 W Hwy 101, Port Angeles
360.452.4432
Stormy Howell, Treatment
Manager

Law & Order/Police Dept.

Justice Center

341 Spokwes Drive
360.452.6759
Sam White, Chief of Police Ext.
2922

LOWER ELWHA FOOD & FUEL

Leif Ellis, 360.477-1170

Natural Resources/Fish Hatchery

760 Stratton Road
360.457.4012
Matt Beirne, Director Ext. 7485

Planning & Development

Arlene Wheeler, Director Ext. 7437

Prevention Health/GYM

Jason Wheeler, Ext. 7440

Social Services

3080 Lower Elwha Road
360.565.7252
Becca Sampson-Weed, Director
Ext. 7456



Vaccine Information



LOWER ELWHA KLALLAM TRIBE

ʔéʔx̣ʷaʔ nəx̣ʷsʔáʔəm' "Strong People"

2851 Lower Elwha Road
Port Angeles, WA 98363

(360) 452-8471
Fax: (360) 452-3428

Expanded ages for COVID-19 vaccine

July 16, 2021

Dear Parent or Guardian,

In Washington State, children ages 12 years and older can now get vaccinated against COVID-19. The Pfizer-BioNTech COVID-19 vaccine was approved by the federal government on May 12, 2021 for expanded ages. The same day, the Western States Scientific Safety Review Workgroup approved the Pfizer vaccine for expanded use in Washington State. This means you can schedule your children who are 12 and older for COVID-19 vaccination.

The Lower Elwha Klallam Tribe, the WA State Department of Health, and local school districts recommend eligible children get vaccinated against COVID-19 as soon as possible so they can return to normal activities such as in-person learning, sports, and visiting friends.

Parents/guardians can schedule vaccine appointments for their children by calling the Lower Elwha Health Department at 360-452-6252. Here are a few important notes:

- Children ages 12-17 can only get the Pfizer-BioNTech vaccine. The other two vaccines in the U.S. are only available for ages 18 and older.
- The Pfizer vaccine is given in two doses, spaced at least three weeks apart.

To prepare for the next school year, we encourage parents to schedule wellness visits with their health care provider early. Because required school vaccinations must be spaced at least two weeks apart from COVID-19 vaccination, we encourage parents/guardians to plan accordingly if their child needs additional vaccines. Check what vaccines your child may be missing at wa.MyIR.net.

The Pfizer vaccine is safe and effective in adolescents 12 and up. Just like adults, children may experience some common side effects for 1 to 3 days after vaccination, including sore arm, tiredness, or headache. If you have questions or concerns about COVID-19 vaccination, we suggest talking with your health care provider.



Vaccine Information

COVID-19 Vaccines What Parents of Minors Should Know

Why should children get vaccinated?

Since March 2020, about 1.5 million children in the United States have gotten COVID-19. Children account for over 20 percent of new COVID-19 cases.

Getting vaccinated will help children stay safe at school and hang out with their friends and family again. They'll be much less likely to get seriously ill, be hospitalized, or die from COVID-19.

Which vaccine should minors get?

Minors (12 - 17 years old) are eligible for the Pfizer-BioNTech vaccine.



Clinical trials showed that this vaccine was proven to work very well at preventing COVID-19 in youth.

Other COVID-19 vaccines haven't been authorized for youth yet.

Does my child need a second shot?



Yes, the Pfizer vaccine is two doses given 21 days apart. Your child must get the Pfizer vaccine for both doses

Ask to schedule an appointment for your child's second dose when they are getting their first dose.

What does the COVID-19 vaccine do?



The COVID-19 vaccine trains your body to build defenses to the disease that keep you from getting sick.

Are the vaccines safe?

Yes. The Pfizer vaccine was tested on **thousands** of youth and shown to be safe. It was also very effective - none of the youth volunteers who got the vaccine got COVID-19.

The vaccine was shown to be safe across people of many races and those with health conditions.



The Department of Health checks safety reports regularly to make sure there are no safety concerns.

When can children see their friends and other family members?

People are fully vaccinated two weeks after their final dose.

Visit our website lifeaftervaccine.org for more information on how your child can continue to protect themselves and their community.



For more information



Visit: COVIDVaccineWA.org or DOH.WA.GOV/Coronavirus



Call: 1-833-VAX-HELP (1-833-829-4357), Press #

Language assistance is available.

Vaccinate WA
CovidVaccineWA.org



Council Resolutions 2021

Date	Resolution Number	Title	Vote		
			For	Against	Abstain
6-1-21	69-21	Approval of 2022-2023 Agreement Between the Lower Elwha Klallam Tribe and Washington State Department of Natural Resources Regarding Forest and Fish Support Account	3	0	0
6-1-21	70-21	Approval of EPA performance partnership grant app	3	0	0
6-15-21	71-21	Authorization of FY 2021 Timber, Fish and Wildlife Supplemental Funds	2	0	0
6-15-21	72-21	Approval of equipment purchase between the LEKT and Jordan Excavating for a 2007 Kenworth T800 with 2006 Side Dumper	3	0	0
6-15-21	73-21	Approval of renovation projects for 2020-2021	2	0	0
6-7-21	74-21	Dry Creek road reconstruction project sewer line funding authorization	4	0	0
6-15-21	75-21	Adoption of hunting regulations for the 2021-2022 season.	3	0	0
6-15-21	76-21	Approval of the appointment of Froilan Sarmiento, CFO, as Authorized representative for US Treasury for American rescue plan act (ARPA) with indemnification of the CFO.	3	0	0
6-15-21	77-21	Approval of the appointment of Froilan Sarmiento, CFO, as authorized representative for US Treasury for US dept. of the Treasury Coronavirus relief fund award terms and conditions with an indemnification of the CFO.	3	0	0
6-15-21	78-21	Approval of the Lower Elwha Klallam Tribe COVID-19 vaccination Promotion Program.	3	0	0
6-15-21	79-21	Authorizing Submission of an Application for Grant Assistance to the US Department of Interior, Bureau of Indian Affairs—Office of Indian Services Division of Workforce Development for the development of P.L. 204 477 Program Plan.	3	0	0
6-29-21	80-21	Approval of Lower Elwha Klallam Tribe to move to Phase 3.5 of the COVID-19 Re-Opening Plan	4	0	0
6-29-21	81-21	Approval of 2000 NC-62 Indian nation program agreement between LEKT and DCYF agreement #2162-14865	4	0	0
6-29-21	82-21	MOA between HIS and LEKT public law 86-121, HIS project PO-21-N14 Elwha heights water main repair	4	0	0
6-22-21	83-21	2021 Administration for Native Americans, American rescue plan act emergency native language funding (ratify).	4	0	0



Birthdays & Police Call Logs

Service Record for L & O	June
911 Hang-Up	7
Alarm/Alarm Check	2
Animal Calls	2
Assault	1
Business Check	177
Citizen Assist	3
Citizen Contact	17
Civil	2
Community Oriented Policing	101
Court Paperwork/Service	14
CPS/APS	1
Disturbance	3
Follow Up	23
Found/Recovered/Lost Property	3

Frequent Patrol Request	9
Malicious Mischief	1
Other Agency Assist	29
Report of Open Door/Window	3
Suspicious Person/Vehicle	6
Theft	1
Threats	1
Traffic Control/Emphasis/ Hazard	9
Traffic Stops	28
Trespass	3
Vehicle Lockout	2
Welfare Check	7
Warrant Attempts	2
Warrants-Tribal	1
Warrants-Non-Tribal	1
Total	459



STAFF BIRTHDAYS!

8/1 Jessica Egnew	8/10 Juanita Charles	8/15 Mark Strong	8/23 Taylor Jones
8/2 Brandy Swan	8/10 Nathaniel McKnight	8/15 Deann Lester	8/26 Oscar Suluskin
8/5 Kyle Birmingham	8/12 Becky Charles	8/16 Nylene Charles	8/28 Steve Stigler
8/5 Analeigh Otis	8/14 Nicholle Lamreau	8/17 Manuel Sanchez	8/28 Gordon Charles
8/6 Nia Kaye	8/14 Aloma Sisco	8/18 Darryl Svec	8/29 Korene Amundson
8/7 Charlene Lauderback	8/14 George Philpot	8/19 Irene Peters	8/29 Rose Jefferson
8/9 Jamey Russell	8/15 Carol Brown	8/21 Erica Jovick	
	8/15 Jada Cargo Acosta	8/22 Alan V Charles	



4779 South Dry Creek Road
Port Angeles, WA 98363
360.452.9250
info@cedarboxsmokeshop.com



CEDAR BOX SMOKE SHOP ©2015
ENTERPRISE OF THE LOWER ELWHA KLALLAM
TRIBE



Vaccine Information

**Minors are eligible for the Pfizer-BioNTech COVID-19 vaccine.
Not all providers and vaccination sites carry it, so you may need to check a few places**

Where can minors get vaccinated?



Child's health provider



Mass vaccination clinics



Local pharmacies



Pop-up or community clinics

How do minors get an appointment?



Call your child's provider or make an appointment online for them.

Visit our website: **vaccinelocator.doh.wa.gov**

Or call 1-833-VAX-HELP (1-833-829-4357), then press #
Language assistance is available.

You may hear about the clinic from a friend or community member. Ask them how to sign up.

What should minors bring to their vaccine appointment?

In most cases, parents and guardians will need to provide consent to vaccination for someone under age 18. Ask the vaccine location what they need for consent.

They may be asked for the following, but children do not need to give them:

- identification
- insurance card
- social security number



Children do not need to be a U.S. citizen to get the vaccine. They will not ask for anyone's immigration status.

Personal data will only be used for public health purposes.

What are the side effects?

Side effects are common. Just like adults, your child may feel:

Throughout their body:

- Tiredness
- Headache
- Muscle pain
- Chills
- Fever
- Nausea



On the arm where your child got the shot:

- Pain
- Redness
- Swelling



It is common to experience stronger side effects after the second dose of the Pfizer-BioNTech COVID-19 vaccine.

Call 911 if your child has an allergic reaction. You can report any side effects your child feels: **vaers.hhs.gov**.

How much does the vaccine cost?

The COVID-19 vaccine is available at no cost to you or your child. You should not be charged or get a bill.



DOH 820-174 May 2021

To request this document in another format, call 1-800-525-0127. Deaf or hard of hearing customers, please call 711 (Washington Relay) or email civil.rights@doh.wa.gov



Emergency Rental Assistance



LOWER ELWHA KLALLAM TRIBE EMERGENCY RENTAL ASSISTANCE (ERA) FAQs

1. Who is eligible? A household must:

- Pay rent toward a rental agreement or “rent to own” mutual help agreement
- Have a household income at or below 80% of the area median income (Clallam County graph below). If you live outside Clallam County your AMI will be calculated to your location.

FY 2021 Income Limit Area	Median Family Income Explanation	FY 2021 Income Limit Category	Persons in Family							
			1	2	3	4	5	6	7	8
Clallam County, WA	\$76,400	Very Low (50%) Income Limits (\$) Explanation	24,750	28,250	31,800	35,300	38,150	40,950	43,800	46,600
		Extremely Low Income Limits (\$)* Explanation	14,850	17,420	21,960	26,500	31,040	35,580	40,120	44,660
		Low (80%) Income Limits (\$) Explanation	39,550	45,200	50,850	56,500	61,050	65,550	70,100	74,600

AND one of the following criteria:

- Qualified for unemployment benefits.
- Have experienced a reduction in household income, incurred significant costs, or experienced other financial hardship due to COVID-19 (since March 2020).
- Can demonstrate a risk of experiencing homelessness or housing instability (since March 2020).

2. Is there an application deadline?

- Funds will remain available until either the Tribe or the Treasury exhausts them.

3. Do I qualify if I have already received assistance?

- Yes, as long as the funds are not being used to cover the months that have already been paid.

4. I already receive housing assistance from the federal, state, or local government. Can I still apply?

- Yes, but funding will only cover your portion of the rent payment.



Elwha Peaks



**AUGUST 15TH
2PM TO 3:30PM**

**401 E. FIRST ST.
PORT ANGELES, WA**

ELWHA PEAKS CANNABIS PRESENTS

A PATIENT'S GUIDE TO MEDICAL CANNABIS

JOIN US!

We'd love for you to join us at the Lower Elwha Klallam Heritage Center on August 15th for a class on non-psychoactive medical cannabis, followed with an opportunity to ask questions.

Certified Medical Consultants Adam Dewey and Nathan McKnight will be discussing medical cannabis and the medical marijuana program benefits.

Seating is limited, so you must reserve your seat by contacting Nathan at (360) 912-3469.

We hope to see you there!

The Elwha Peaks Cannabis Team



Adam Dewey
Purchasing Director



Nathaniel McKnight
Operations Director

MUST BE 21 +

www.ElwhaPeaks.com | (360) 912-7533
4775 S. Dry Creek Rd. Port Angeles, WA 98363
Open 7 Days a Week 8AM to 10:30PM

ENHANCING THE LIVES OF PEOPLE



Elwha River Casino

August 2021



PROMOTIONS AND EVENTS:

SENIOR DAY:

EVERY WEDNESDAY SENIORS 55+ QUALIFY FOR 2X POINTS FROM 12PM-8PM AND HOT SEATS FROM 12:30PM-4PM!

FOOD TRUCK BUCKS:

ELWHA REWARD MEMBERS MUST EARN 250 POINTS WHEN ANY FOOD TRUCK IS ON SITE TO RECEIVE \$10 FOOD TRUCK BUCKS TOWARDS A MEAL!

EMPLOYEE APPRECIATION WEEK

ERC WAS SO HAPPY TO GIVE BACK TO ALL OF OUR HARD WORKING EMPLOYEES WITH FOOD, GAMES, AND PRIZES!



ELWHA RIVER CASINO WAS HAPPY TO PROVIDE HOT DOGS, CHIPS, REFRESHMENTS, AND S'MORES AT THE END OF THE YEAR CELEBRATION FOR OUR YOUTH! GREAT TURN OUT!



TAKE ME OUT TO THE BALL GAME!



ELWHA RIVER CASINO, LOWER ELWHA FOOD & FUEL, AND ELWHA PEAKS SPONSORED HOODIES FOR THE PORT ANGELES LEFTIES!



THANK YOU



SO MUCH!!

The Elwha River Casino would like to take the opportunity to thank Gina Williams for her loyalty, hard work, dedication and passion that she brought with her to the Elwha River Casino and our guests the last 12 years working in our Rivers Edge Grill. Gina was brought on board to provide the deli and the team with structure and direction that it was lacking. She hit the ground running and faced the challenges head on while bringing a fresh perspective and sole home cooking into the menu items while leading her teams. Gina created an environment that promoted a respectful and encouraging atmosphere. The Elwha River Casino was glad to have Mrs. Gina, and we're grateful for your contributions to the organization. Warmest congratulations to you and your new position and best wishes for the future. Thank you from the Elwha River Casino!!



Emergency Rental Assistance

5. How much assistance can I receive?
 - ERA can provide up to 12 months rent dating back to March 2020. The amount received will be determined by each individual needs.
6. How soon after I apply will I get funded?
 - Once an application is fully submitted you can expect the process to take 7-14 days.
7. How will I know if LEKT ERA has all the documentation and information they need from me to process the application?
 - Once your application is submitted, you will not be able to go back into the Portal to make changes. LEKT ERA will review your application and contact you via e-mail to inform you of any discrepancies or missing information that will prevent processing your application. **IT IS IMPORTANT THAT YOU MONITOR YOUR E-MAIL FOR ANY MESSAGES.**
8. Will LEKT ERA provide me with the full amount I requested?
 - No. Your application is subject to review by LEKT ERA and funding availability.
9. If utilities are covered in the rent, will LEKT ERA still process payment?
 - Yes, utilities covered under rent will be treated as rent.
10. If approved, when will I receive the money?
 - If approved, your payment will be sent directly to the landlord and/or utility company.
11. Does my landlord need to be involved?
 - Yes, LEKT ERA will need your landlord to provide a rental ledger, W-9, and tenant information.
12. What information do I need to provide?
 - Photo ID, income for each household member over the age of 18 for 2020, current copy of lease agreement, COVID impact (letter from employer, proof of unemployment, loss of income), and a rent statement and/or utility bill.

Additional questions?

Please submit questions to lekt.era@elwha.org

Applications available online at <https://tinyurl.com/LEKTERA>

Computers are available at the Tribal Center (360.452.8471 ext. 7490), Library (360.452.8471 ext. 7425), & Heritage Center (360.417.8545)



Klallam Language & Culture Elementary youth activities August 2021

11 AM – 2 PM

- Tuesdays & Wednesday @ Gathering Place**
- Thursday & Friday in the Language & Culture Program building**

Parents/caregivers encouraged to stay. An adult is required to stay with kindergarteners & 1st graders.

Week 1: Cedar Roses

Week 2: Beach wood / Devils club mobiles

Week 3: Tie Dye / Personalizing Masks
(Bring your own clothing optional)

Week 4: Berry Picking / Preserving

No food or transportation provided. COVID-19 restrictions, screening, and waiver required. Waivers for children MUST be signed by an adult.

Email Ashley.pitchford@elwha.org for more information.





Food Bank



Your new food bank has specialized items available, and is fully prepared to fulfill orders based on dietary needs and restrictions.

Hygiene bags, including travel size bathroom necessities, are available to anyone experiencing homelessness.

Summer Youth are currently hard at work stocking the shelves, and we look forward to seeing you at this wonderful new facility.

Volunteers are always needed! If interested, please contact Sateva Henderson at 360-452-8471 x7452 or sateva.henderson@elwha.org.





Food Bank

The New Lower Elwha Food Bank is Ready to Serve!

Beginning August 3rd, your beautiful new food bank will be available Tuesday and Thursday afternoons, with every intent to expand those hours next year.

Located at the corner of Lower Elwha Road and Spokwes Drive, this 3000 square foot facility offers an 8x12 cooler, 8x12 freezer, a 6x6 freezer, and three side by side reach-in coolers. It is easily accessible from the tribal shuttle route. A restroom is also available onsite.

A brand new gas stove and kitchen provides an ideal space for cooking classes and hot meals in the future. The roll-up door in the front will allow for deliveries to be loaded directly into the freezers with the use of a pallet jack.





Klallam Language & Culture September Announcements

ELEMENTARY AFTER SCHOOL PROGRAM:

After School Program will begin September 28, 2021. Sign up required with limited space available, tribal member/descendant preference given.

Group A: First-third grade Tuesday & Wednesday.

Group B: Fourth-sixth grade, Thursday & Friday.

No transportation provided. Students MUST be picked up before 4:45. COVID-19 restrictions, screening, and waiver required.

Waivers for children MUST be signed by an adult.

Email ashley.pitchford@elwha.org for more information.

COMMUNITY ACTIVITIES:

The community culture class for September will be drum making. Limited supplies available, sign up will be required with active drum group members and tribal members/descendants preference.

No food transportation provided. COVID-19 restrictions, screening, and waiver required. Waivers for children MUST be signed by an adult.

Email angelina.Sosa@elwha.org for more information.



August 2021 Culture & Language

namá sk'áči Sunday	sc'írek'ínát Monday	cajenát Tuesday	tx'ínát Wednesday	nasínát Thursday	td'čínát Friday	sqémáyu Saturday
1	2	3 11-2PM Craft drop in @Gathering Place 4:30-6:30pm Song and Dance	4 11-2PM Craft drop in @Gathering Place 4:30-6:30pm Weaving	5 11-2PM Craft drop in @New Culture Building Beadng 2-4:30pm	6 11-2PM Craft drop in @New Culture Building Beadng 2-4:30pm	7 Canoe practice @Log Cabin. Sign up for more info
8	9	10 11-2PM Craft drop in @Gathering Place 4:30-6:30pm Song and Dance	11 11-2PM Craft drop in @Gathering Place 4:30-6:30pm Weaving	12 11-2PM Craft drop in @New Culture Building	13 11-2PM Craft drop in @New Culture Building	14 9am Hide Cleaning Class @cooking shed behind tribal center
15 9am Hide Cleaning Class	16 2pm Hide Cleaning Class	17 11-2PM Craft drop in @Gathering Place 4pm Open House ★ 4:30-6:30pm Song and Dance	18 11-2PM Craft drop in @Gathering Place 4:30-6:30pm Weaving	19 11-2PM Craft drop in @New Culture Building 2-4:30pm Beading	20 11-2PM Craft drop in @New Culture Building 2-4:30pm Beading	21
22	23	24 11-2PM Craft drop in @Gathering Place 4:30-6:30pm Song and Dance	25 11-2PM Craft drop in @Gathering Place 4:30-6:30pm Weaving	26 11-2PM Craft drop in @New Culture Building 2-4:30pm Beading	27 11-2PM Craft drop in @New Culture Building 2-4:30pm Beading	28 Kallam Language Program
29	30	31 4:30-6:30pm Song and Dance				

Drum Group: No meals or transportation will be provided at this time.

Please sign up for Canoe Practice (we will need at least 5-6 strong pullers adult or teens)

Covid screening and waivers required.

Contact info Angelina.sosa@elwha.org

Drop-In Culture Program is open for school age children (K-1 must be accompanied by an older sibling or adult)

Lunch will be picked up from The Boys and Girls Club Lunch Program on

Place and Ranger Rd from **1:00-1:15pm**

Contact Information: Ashley and Harmony 452.8471 x7422





LEFA

August 2021 Newsletter - Lower Elwha Family Advocacy Program

I (Beatriz) hope all of you are enjoying the summer season the best you can, despite the circumstances you may be facing.

The Lower Elwha Family Advocacy Program staff is finishing up implementing all of the goals, objectives and activities requested in the *IHSDVPI – Indian Health Service Domestic Violence Prevention Initiative* grant, which ends September 29, 2021. Part of final activities of this grant is to provide another on-site training, which is now in a planning stage along with the Elwha Task Force members and supporters. This training will be in closed partnership with *Healthy Transition Program* and the entire *Social Services* department. Please watch for an announcement with detailed information in the mail or on the Elwha website.

Another activity that I will be in collaboration with LEKT programs on, especially with the Language program, is to offer traditional supplies with awareness/educational information in relation to violence and healthy relationships. See Elwha Language Program's events calendar. I will also be distributing and collecting a survey from Elwha community members during **Elwha Drum Group (July 20, 27, August 03, 10, and 24 from 4:00 to 6:30 PM at the Old Day Care building)**. If you have not completed a survey from Beatriz/LEFA in 2019 to now, please do so! Participants who complete a survey receive a \$25.00 gift card.

The **Talking Circle Women's Support Group** is being offered on Wednesdays from 11:30 AM to 12:30 PM via virtual until August 4th. Weekly: Join Zoom Meeting: <https://us06web.zoom.us/j/83934965848?pwd=QldSb0VPTFVhOGdCbVptZVIvbS9uQT09>
Meeting ID: 839 3496 5848; Passcode: 993805

One tap mobile: +12532158782,,83934965848#,,, *993805# US (Tacoma);
+13462487799,,83934965848#,,, *993805# US (Houston)

Note: A new schedule and a new Zoom link access of *Talking Circle Women's Support Group* will be sent on September newsletter.

Lastly, I would like to send heartfelt appreciation to those who made it possible for me to be the **2021 Visionary Voice Award Washington State Recipient**. This was announced and posted by **WCASP – Washington Coalition of Sexual Assault Program** – in Olympia, WA at their Facebook page on May 18, 2021. To all of you who have been my backbone in many ways, háʔnəŋ cn – thank you. I am truly honored and absolutely grateful for this recognition and celebration of award.

I am privileged to live and work in the heart of the Lower Elwha Klallam Tribe.
Sincerely,

Beatriz Arakawa, Program Manager and Victim Advocate

Lower Elwha Klallam Tribe - Lower Elwha Family Advocacy Program

3080 Lower Elwha Rd. Port Angeles, WA 98363

Office: 360-565-7257 ext. 7453; Cellular Hotline 1: 360-460-1745; Hotline 2: 360-775-9346

E-mail: Beatriz.arakawa@elwha.org

Assistance to Victims of Domestic Violence, Sexual Assault, Dating Violence, Stalking, and Provide Prevention/Awareness.

Mission: Victim's Safety and Autonomy through Advocacy and Community Awareness.



Head Start & Early Head Start

Lower Elwha Head Start & Early Head Start360)- 452-2587 Ext 2 Early Childhood Director (Debbie)*(Ext 1 Child Care Manager/Bobi)*

Health Manager: Deanna Transportation: Francess

Education Manager: Lola Prenatal Educator: Donna

Family Community Partnership Manager & Enrollment: Michelle

čəntáqa? (August 2021)

IMPORTANT REMINDER

Is your head start application complete? All household income verification is required. Only completed applications will be considered for class selection for the 2021-22 school year. If you want tribal points, please include your tribal verification/proof with each application. Please call Michelle @ 360-452-8471 x7474 to verify. Make sure your phone and address are updated so we can reach you.

What's up with Lower Elwha Head Start? Aka "The Children's House of Learning"

We now share the beautiful, new building with the Lower Elwha Child Care program. Bobi Clark is the Manager of the Child Care program @ 360-504-3141

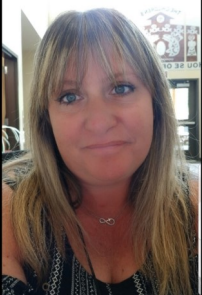
2020: We were mandated to close in March due to COVID. Months later, we have gradually opened with new safety procedures including daily temperature recording by all children. We currently have all classes open but kids are scheduled to attend two days a week with one day of big cleaning and disinfecting. As of today, we are not sure what 2021-22 schedule will be yet. New rule, parents drop off children at the front desk with a staff member and the staff takes child to their classroom, then the parents leave. All adults are still required to wear masks in the building to protect our children.

The new beautiful building is located at 291 Spokwes Drive, next to the police station, next to the tower. We will let everyone know when we can host an open house safely so our community can come see our new beautiful building.

NOTE: We still have some new and current job openings, we lost some staff when COVID hit, so we need to fill some positions ASAP. Look on elwha.org for these amazing opportunities to join a great team.

DEANN LESTER: Child Care Administrative Assistant/Receptionist

Deann greets you at the front door and escorts your child to their classroom, most of you already know her but she is our "Staff Spotlight" this month. Thank you for all you do, Deann!



I started working for Child Care when my son Nyle Hepfer was two years old in 2008. In 2009, I was offered the position of opening the Early Head Start when they first received the funding. I took college courses and got my CDA and many more trainings and became the Lead Supervisor Infant teacher. I worked from 2009 until 2014 and then took a couple years off and returned in 2018 to Child Care and am now the Child Care Administration Assistant/Receptionist.

If I could go anywhere in the world it would be somewhere warm and tropical.

Facts about myself are that I have been in this community since I was 15 years old and married Russell (Razz) Hepfer in 1998 and had our son Nyle River in 2006 and since have been bonded to this beautiful community since.

Favorite music is all new and old country music.

Advice I would give the children I watch grow up all these years is do not rush life, enjoy each and every day.



Community News

Your Announcement Here!

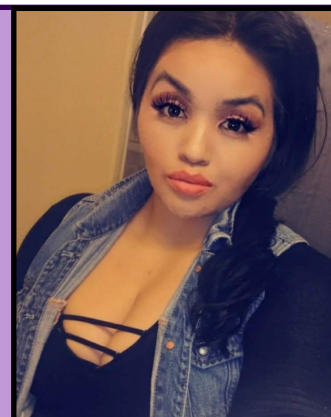
Email CommunityNews to
Newsletter@Elwha.org by the 3rd Friday of
every month for inclusion into the next monthly
newsletter.

Wishing my niece
Stacie Lynn a very
happy birthday.

August 19th



Love Always, Dorene



SCHOOL SUPPLIES FOR 2021-2022

Backpacks and supplies will be available this year at your school or you can have them delivered as we did last year. We will leave them on your porch. We will have a form to fill out and return to the Education Department by August 9, 2021. Please call (360) 452-8471 x7425 with questions.

SUMMER READING PROGRAM

Prizes!

July 26th—Aug 26th

Visit the Library, or Call Rayin to
sign up: (360)452-8471 x7431

NOTICE: The dumpsters
at the Lower Elwha Food &
Fuel are not for public use.
Please utilize the facilities
provided at the Tribal Center
for this purpose.

Thank you!



Vaccine Support Program

Lower Elwha Klallam Tribe

ADULT

COVID-19 Vaccine Promotion

\$400.00

Eligibility

COVID-19 **Fully Vaccinated:**

- Enrolled LEKT Members
- First generation LEKT descendants
- LEKT employees
- Significant partners of Enrolled LEKT Members, first generation LEKT descendants, and LEKT Employees.*



-Must provide proof of vaccination.

*Significant partners must provide proof of residence with Enrolled LEKT Members, first generation LEKT descendants, and LEKT Employees

Apply at www.tinyurl.com/elwhaadult

Paper applications available at:
Tribal Center & Social Services

YOUTH

COVID -19 VACCINE PROMOTION

Fully vaccinated youth that are part of the Lower Elwha Klallam Community will receive a promotion item. Eligible youth ages 12-17 include:

- Enrolled LEKT Tribal Members
- LEKT first generation LEKT descendants
- Household member of Enrolled LEKT members
- Household member of LEKT employees

To complete application visit: <https://tinyurl.com/elwhayouth>





Community News

Seeking Klallam carver for projects:

- 1) Carving a 8ft.standing cedar tree into something
- 2) Carving four 12-14 inch flat plaques of animal figures
- 3) Carving large panel or figure (20x30in) for above a mantle

All projects will be displayed in prominent locations. Contractual pay available. Please contact Wendy Sampson for more info.
(360)461-6453

ENHANCING THE LIVES OF PEOPLE

CANNABIS | TINCTURES | FLOWER | PRE-ROLLS | CONCENTRATES

EDIBLES | INFUSED DRINKS | TOPICALS | ACCESSORIES

MEDICAL CANNABIS CONSULTANTS AVAILABLE & COMPETITOR PRICE MATCHING



TRIBAL MEMBERS
SAVE 10%
EVERY DAY!

ELWHA PEAKS CANNABIS
EST. 2020

f @ELWHAPEAKS
@ELWHAPEAKS2.0
@ELWHAPEAKS
@ELWHA.PEAKS
^^ FOLLOW US ^^

4775 S. DRY CREEK RD.
PORT ANGELES, WA 98363
(360) 912-7533
OPEN 8AM TO 10:30PM
<< SCAN TO SHOP <<

This product has intoxicating effects and may be habit forming; Cannabis can impair concentration, coordination, and judgment; Do not operate a vehicle or machinery under the influence of this drug; there may be health risks associated with consumption of this product; For use only by adults twenty-one and older; Keep out of the reach of children.



Heritage Training Center



CDL CLASS A

Begins August 16th, 2021



Hosted by the Lower Elwha Klallam Tribe at the
Heritage Training Center

For more information, please call

360-417-8545 x2912

Space is very limited.

Lecture: 8/16 - 8/19 | 6am - 4:30pm

Elwha Klallam Heritage Training Center

401 E First St

Port Angeles, WA 98362

EVERY Class day MUST BE attended in order to complete state
required hours for CDL training.

Drive Time: 8/23 - 9/9 | 6am - 4:30pm

Trucks will be stationed in Port Angeles. Students will decide
driving groups during the first week of class.

Cost: \$5394.00



Requirements:

State regulation requires that all students must submit either a
government issued Certified Birth Certificate or US Passport In order to
obtain A CDL permit. No photocopies accepted. CDL DOT Physical and
Drug screenings must be within 30 days of the start of the class, Costs
are included in the tuition pay



Nutrition & Diabetes

JULY 2021 NEWSLETTER

KLALLAM STRONG: NUTRITION & DIABETES NEWSLETTER

Dawn Travelstead, MS, RD, CDE

In this issue:

- Phytonutrients
- Eating the Rainbow
- Did you know
- Glycemic Index



Glycemic Index

Refers to how fast sugar gets into the blood stream. You want to avoid the HIGH glycemic foods as much as possible. Such as:

White potato, white rice, anything made with white flour (bread, crackers, etc), fruit juice, dried fruit, melon and tropical fruits.

Monitor your blood sugar to see how these foods affect you, we are all different. More info-call me.

Did you Know?

A great place for recipes:

www.diabetesfoodhub.org

Phytonutrients— What are they?

Natural compounds found in plants that are powerful defenders of health. Studies show that people who eat more plant foods have reduced risk of chronic diseases such as diabetes, heart disease and cancer.

Food Benefits:

Red: Anti-inflammatory, heart/hormone health

Orange: Anti-cancer, immune/skin health

Yellow: Cognition, eye/heart health

Green: Brain /liver health, hormone balance

Blue/purple: Anti-cancer/inflammatory, brain health, heart health

Ways to get more Phytonutrients

1. Aim for 9-13 servings of plant foods daily
2. Try new varieties. Grow a garden, visit the farmers market or the community garden
3. Eat local sourced traditional foods
4. Take your children or grandchildren berry picking. I eat more than I bring home!
5. Add dried fruit to your leafy green salad.
6. Have a fruit/spinach smoothie.

Don't forget to schedule your diabetes quarterly.

If you would like a nutrition session, please call me @ 360-912-1500.





Well-Child and Well-Baby Checkups: Keeping our Children Healthy



Your child was seen by the doctor when they were sick; does this take the place of their well-child or well-baby checkup?

No.

While some doctors may do the needed physical while caring for mild illnesses most will not. When you call for an illness or injury, less time is scheduled than for a full checkup. Some doctors will even have you reschedule checkups if your child is not well when they come for their well-child appointment. Children cannot receive immunizations while ill and will have to get well before getting their shots.

Why is extra time needed?

Doctors are required to complete a set plan of screenings and immunizations at checkups based on your child's age. This is known as the Early & Periodic Screening, Diagnosis & Treatment Program (EPSDT). This plan was developed from recommendations from the American Academy of Pediatrics and is designed for children up to age six.

Physicians who take Medicaid payments legally must provide the care designated in the EPSDT.

It is your child's right to receive this quality of care! Medicaid, and private insurance, must pay for these checkups as scheduled in the EPSDT, so even if your child has been in to see their doctor multiple times for illnesses, they still can be seen for their checkups.



Health Department

What is the EPSDT timeline for checkups?

Prenatal

Newborn/2—4 days

1 month

2 months

4 months

6 months

9 months

12 months

15 &/or 18 months

24 months

3 years

4 years

5 years



Doctors will provide needed diagnostic screenings, including for behavior, development, sensory (hearing and vision), and dental; immunizations; provide information on nutrition, safety, and sleep; complete a health history; and assess risk factors for lead, TB, and cholesterol.

The best way to insure your child is receiving full benefit of the EPSDT is to make and keep all well-baby/well-child checkups.